



# MARK YOUR CALENDARS!

## FIX-A-LEAK-WEEK: MARCH 13-19

Every year, Fix a Leak Week aims to increase awareness about water conservation and motivate individuals to find and fix leaks in their homes. According to the US Environmental Protection Agency, household leaks waste around **1 trillion gallons of water** per year nationwide. Even small leaks can result in significant water waste and higher utility bills, so it's essential to address them as soon as possible.

### Here are some valuable tips to detect and fix leaks:



- First, check your water meter to detect leaks. Turn off all water in your home, and if the meter continues to move, it indicates a leak somewhere. Look for visible leaks, such as water stains on walls or ceilings, musty odors, or damp spots on the floor. Toilets are a frequent source of leaks, so add food coloring to the tank to check if the water in the bowl changes color. Leaks may also occur at faucets, showerheads, and irrigation systems. Inspect them for dripping or leaking.



- Once you have detected a leak, take prompt action to fix it. Replacing worn or damaged parts such as washers, gaskets, or O-rings is a common solution. Tightening loose connections between pipes and fittings can also fix leaks. Faulty valves may need replacement, and calling a plumber is a viable option if you are not comfortable fixing the leak yourself.



- Fix a Leak Week is an excellent opportunity to inspect your home for hidden leaks and make the necessary repairs. By doing so, you conserve water and save money on your utility bills. Remember, even small leaks can add up over time, so it's essential not to ignore them. Take action today to protect our precious water resources.

# Do you own a FLUME device, yet?



Leaks can run, but they can't hide from Flume! If you would like to be proactive and want to protect your home from expensive surprises, the FLUME device may be something you should consider owning. The Flume device you can track indoor and outdoor water use 24/7 and get instant leak alerts. With "vacation mode" the Flume can automatically notify a friend or neighbor of unscheduled water use.

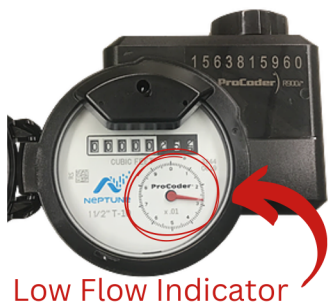
Flume puts the power of water consumption and conservation in your hands, protects your home, and improves your relationship with our most precious resource. This affordable technology helps you manage an essential resource and eliminate water waste. Flume typically costs \$199 plus tax and shipping, but through this program with Rainbow MWD you pay only \$49 with no ongoing subscription fees.

Flume Water Monitoring Device Features:

- Detect unknown leaks before you get the bill or cause costly damage.
- See how much water you are using in real-time, as well as daily, weekly, and monthly.
- Set water usage goals and budgets.
- Receive smartphone notifications on suspicious water activities while away from home.

Visit [www.flumetech.com/rainbow](http://www.flumetech.com/rainbow) to order your Flume device TODAY and start saving water, money, and protecting your home.

## How to Read your Meter and Detect Water Leaks:



Detecting water leaks is an essential step in managing your water consumption and preventing unnecessary costs. Your water meter can be a valuable tool in identifying leaks early on. Here are some steps to help you read your meter and detect potential leaks:

**Step 1:** Locate your water meter. The water meter is typically located near the street, in a box in your yard. It may be covered by a metal or plastic meter box lid. Remove the lid using a large flathead screwdriver.

**Step 2:** Find the meter register and flip open the register lid, and locate the low flow indicator; it is typically a red dial that will spin clockwise when there is water usage or water is passing through the meter.

**Step 3:** Ensure no one is using water inside the home—Double-check dishwashers, washing machines, and faucets to confirm zero water usage. If the low flow indicator is rotating, yet there is no water usage, chances are there is a leak.

**Step 4:** Verify the source of the leak. If you suspect a leak, try to locate the source. Check irrigation, toilets, faucets, and pipes for signs of leaking or dripping water. You may also want to call a professional plumber to help locate the source of the leak.

**Note:** If the low flow indicator rotates intermittently, chances are you have an intermittent leak which traditionally is a toilet. Toilets leak intermittently because the toilet fills until the float indicates it is full, and as water leaks through, the toilet refills intermittently.

By regularly monitoring your water meter, you can detect water leaks early and save money on your water bill. Remember, the sooner you identify and fix a leak, the less damage it will cause to your home and the environment.