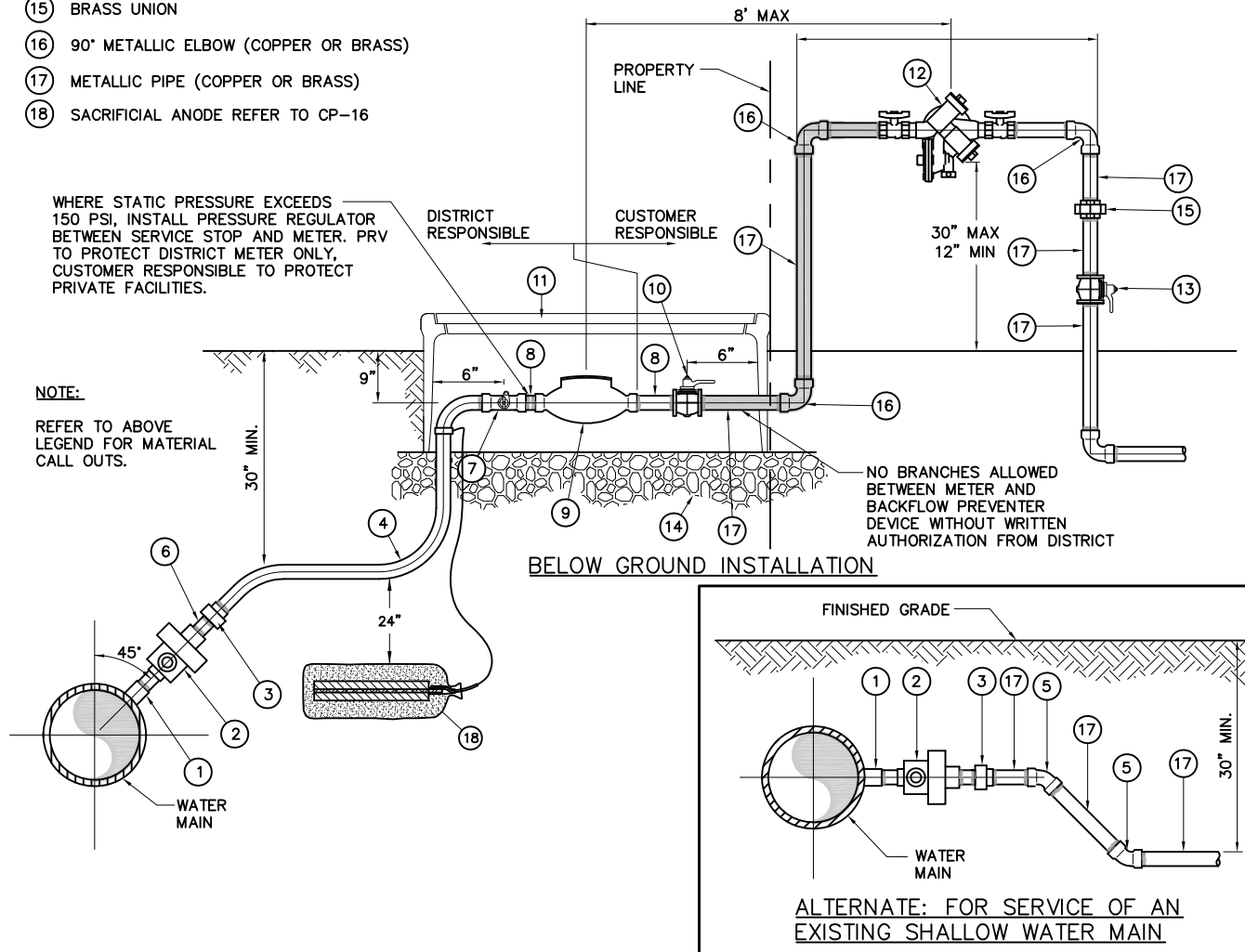


MATERIAL LIST

- ① FORGED STEEL HALF-COUPLING, THREADED, CLASS 3000 WELDED TO PIPE PER W-5. (CML&C PIPE) OR DOUBLE STRAP, STAINLESS STEEL, TAPPING COLLAR (PVC OR DUCTILE IRON)
- ② BRASS CORP STOP
- ③ BRASS MALE/COPPER ADAPTER
- ④ TYPE "K" COPPER TUBING
- ⑤ 45° COPPER ELL
- ⑥ BRASS NIPPLE, THREADED
- ⑦ BRASS SERVICE STOP, B-11 W INSTALLED FOR RIGHT HAND OPERATION PER RMWD SPEC. 15057 2.03
- ⑧ BRASS METER TAILS WITH GASKETS
- ⑨ WATER METER SUPPLIED BY DISTRICT
- ⑩ BRASS BALL VALVE
- ⑪ HDPE PLASTIC METER BOX AND COVER, FOR 1" USE 20"X26" BOX (BLACK) FOR 1.5" & 2" USE 26"X39" BOX (BLACK).
- ⑫ STATE APPROVED REDUCED PRESSURE BACKFLOW PREVENTION DEVICE
- ⑬ BRONZE BALL VALVE, CLASS 125.
- ⑭ 6" BASE OF 3/4" ROCK
- ⑮ BRASS UNION
- ⑯ 90° METALLIC ELBOW (COPPER OR BRASS)
- ⑰ METALLIC PIPE (COPPER OR BRASS)
- ⑱ SACRIFICIAL ANODE REFER TO CP-16

TYPICAL CONSTRUCTION NOTES:

- 1. USE SILVER SOLDER FOR COPPER PIPE JOINTS.
- 2. MORTAR COUPLING AND MALE THREADS OF CORP STOP AFTER CONNECTING TO A MORTAR - COATED STEEL PIPE.
- 3. APPLY BITUMASTIC COMPOUND TO COUPLING AND MALE THREADS OF CORP STOP AFTER CONNECTING TO A TAR / WRAPPED STEEL PIPE.
- 4. PIPE THREADS SHALL BE CLEAN, SHARP, AND WRAPPED WITH A PIPE THREAD SEAL TAPE.
- 5. WHERE METER BOX IS LOCATED IN CONCRETE OR ASPHALT TRAFFIC AREAS, CONTACT DISTRICT FOR AN APPROVED CONCRETE METER BOX.
- 6. ON 1-1/2" & 2" METERS (WHICH ARE FLANGED), PROVIDE THREADED COMPANION FLANGES, 150-LB.
- 7. ALL BRASS FITTINGS TO BE DOMESTIC PRODUCTS.
- 8. WRAP BURIED COPPER WITH 10 MIL CALPICO TAPE OR POLYETHYLENE ENCASEMENT.
- 9. METER TO BACKFLOW - ANY DISTANCE GREATER THAN 8' NEEDS APPROVAL FROM D.E.



WHERE STATIC PRESSURE EXCEEDS 150 PSI, INSTALL PRESSURE REGULATOR BETWEEN SERVICE STOP AND METER. PRV TO PROTECT DISTRICT METER ONLY, CUSTOMER RESPONSIBLE TO PROTECT PRIVATE FACILITIES.

NOTE:
REFER TO ABOVE LEGEND FOR MATERIAL CALL OUTS.

NO BRANCHES ALLOWED BETWEEN METER AND BACKFLOW PREVENTER DEVICE WITHOUT WRITTEN AUTHORIZATION FROM DISTRICT



RAINBOW MUNICIPAL WATER DISTRICT

APPROVED: <i>[Signature]</i>		
RCE # 55790	EXP. 12/31/2012	
REVISION	APPROVED	DATE

TYPICAL 1" TO 2" WATER SERVICE INSTALLATION

STANDARD DRAWING NO.
W-1
DECEMBER 2011

W:\Engineering\04_Standards PDFs\2011 Stds & Specs_ Drawings\CAD\Drawings\CAD\WaterCAD11\2011-W1 2/16/2012 9:29 AM